



Sentry Interlocks



WebLock[®] Web-Based Door Interlocking

Sentry Interlocks' WebLock is an interactive and real-time door interlocking system that uses a web-based application to monitor and control interlocked doors remotely. Using any computer that connects to the facility LAN, Users can monitor and record door activity and allow dynamic configuration of door parameters and interlocking logic. Using a Network Bridge connected to as many as 25 Door Control Modules, WebLock is highly scalable allowing the monitoring and control of up to 100 doors.

Visit us at sentryinterlocks.com or Call 833.Mod.Lock Today!

WebLock® Web-Based Door Interlocking

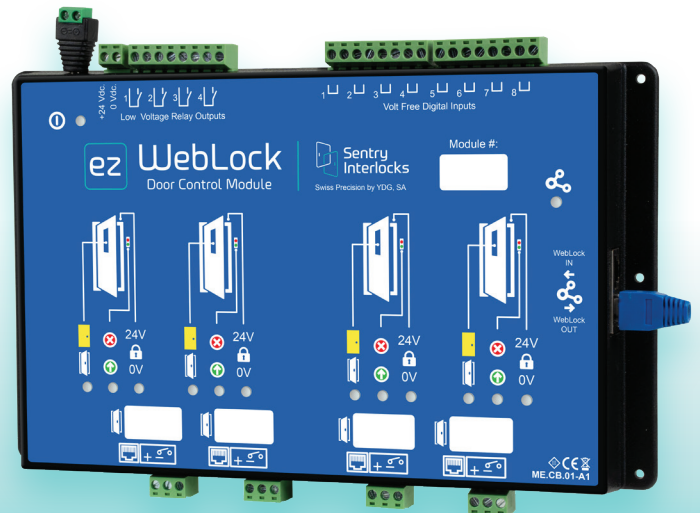
Network Bridge

The brain of the system is the Network Bridge. It has its own CPU and web-based software that runs independently from the facility network or PC connections. By connecting the Network Bridge to the facility LAN and through its dedicated IP address, Users can monitor activity or access the WebLock system remotely. Monitor activity or make changes easily wherever LAN access is available. Using a 8GB memory card the system records all events, from normally operating actions (doors opening/closing) to anomalies (forced openings, emergency openings).



Door Control Module

This Module is the interface between the Network Bridge and the doors. Each Module can connect to four (4) doors all of which could be in different locking schemes. Twenty five (25) Modules can be daisy chained together to allow 100 doors to be controlled. Connections are provided for Door Accessories, Electric locks, Door position sensors, Fire Alarm system, Building Management systems, Access Control input, UV Lamps, Blowers and Pressure sensors.



Remote Computer



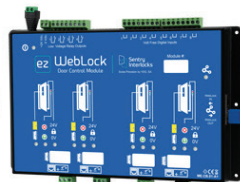
LAN

WebLock | Web Based Application



Network Bridge

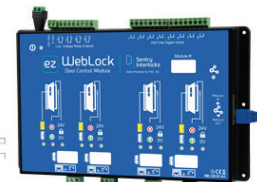
Door Control Module #1

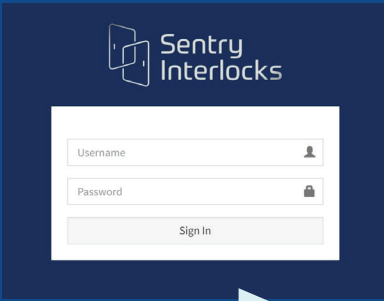


Door Control Module #2

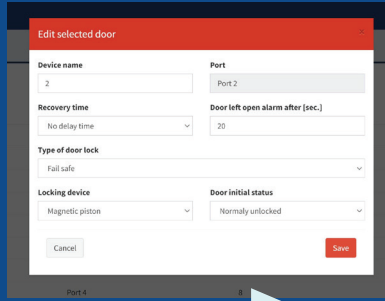


Door Control Module #3





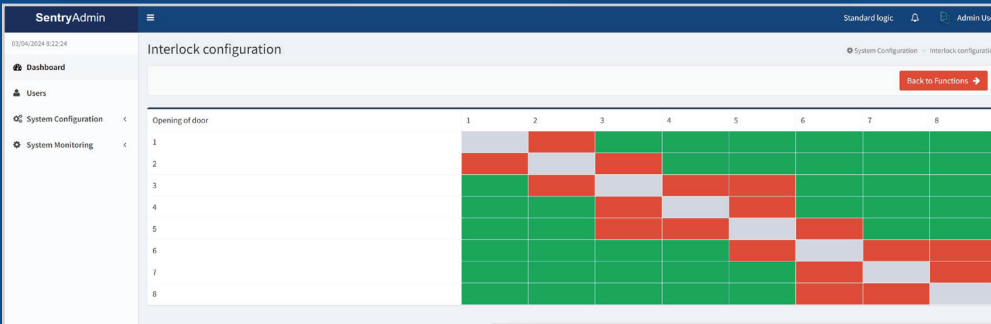
Log-in Screen



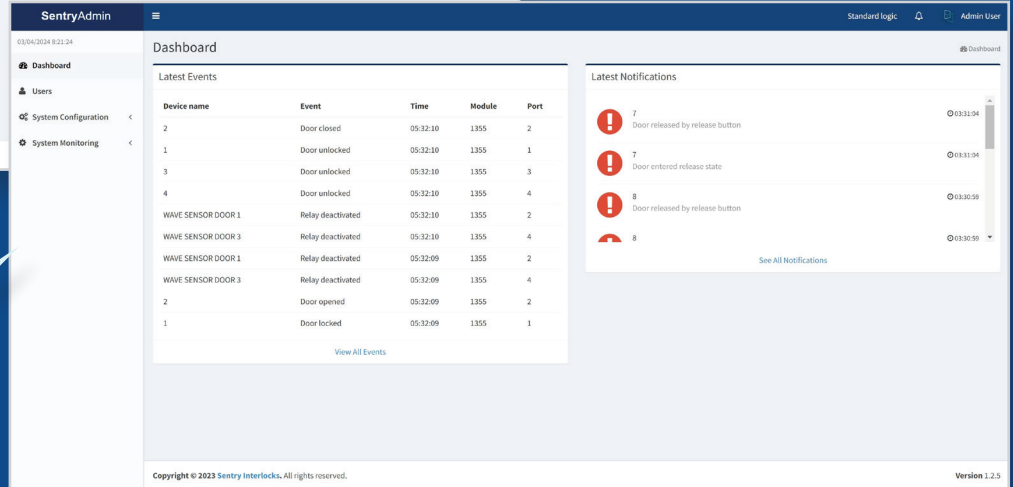
Door Parameter Screen

How it works...

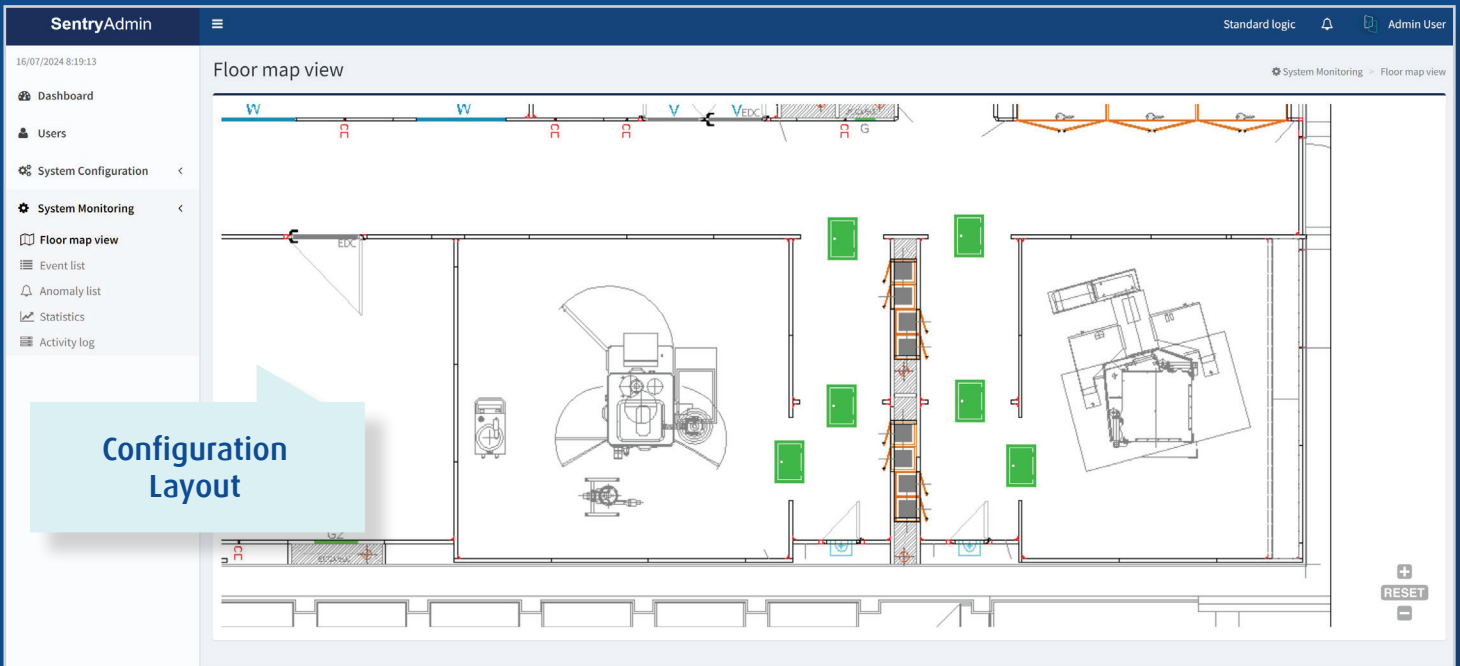
The Graphical User Interface is simple and intuitive to use. There are no programming skills required when using WebLock. Dropdown menus offer the options available, the interlocking logic is set by clicking on the matrix cells and adding door animations to your layout drawing allows the monitoring of every door status.



Interlocking Matrix



Event Log with Warning Codes



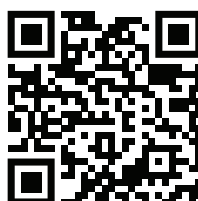
Configuration Layout

Key Product Features

- Can monitor and control virtually any type of door or Pass-Thru – manual or automatic, swing, sliding or roll-up, normally locked or unlocked
- One Network Bridge can connect to 25 Door Control Modules which can control up to 100 doors
- One LAN connection provides direct access to the web-based application via a unique IP address. Monitor and manage the installation from one computer anywhere in the world with access to the internet
- Security provided through two levels of Users (Viewers and Administration) and dedicated passwords
- The Graphical User Interface (GUI) is easy to use and on-line programming is simple and interactive ~ no special programming skills required
- Users can set door parameters, interlocking logic and access control rules
- An interactive layout allows real time monitoring of door state
- Timed delays are possible to allow UV lamps or Blowers to treat the air inside the airlock
- Use Sentry line of Accessories ~ LED indicators, Pushbuttons, EO Switches, Wave Sensors or use 3rd Party Accessories with a Sentry Interlocks Adapter
- Send door status to any Building Management System
- Receive Fire Alarm signals to unlock all doors in emergency situations
- Battery backup provided to retain Event memory when power is lost
- Can operate using Fail Safe or Fail Secure protocol
- Integration services are offered where the WebLock components can be mounted and prewired in a NEMA enclosure before shipping from Sentry Interlocks
- 24VDC/0.7A auxiliary power output to power external device

Product Specifications – Network Bridge	
Power Requirements	24VDC, 1.67 amps max
Power Supply	UL Listed, 90-264VAC to 24VDC, 47-63Hz, 1.67A
Module Dimensions (W x H x D)	7"W x 3.3"H x 2"D (178 x 83 x 50mm)
Module Material	Aluminum with 4 integrated mounting ears
Connections	LAN: RJ45-Cat 5 UTP cable, 10/100 BaseT Ethernet Door Control Modules: Cat 5 UTP Cable
LED Indicators	Power Status, Network Activity
Maximum number of Door Modules in Locking Scheme	25 (each Module handles maximum 4 doors)
Maximum Number of Doors Connected/Managed	Up to 100
Door Opening Logic Programming	Web-based Software
Two Levels of Security	Admin and Viewer
Internal Memory	8GB via SD Card
Cerification	(LVD) 2014/35/EU, (EMC) 2014/30/EU
Warranty	2-Year Limited Warranty

Product Specifications – Door Control Module	
Power Requirements	24VDC, 1.67 amps max
Power Supply	UL Listed, 90-264VAC to 24VDC, 47-63Hz, 1.67A
Module Dimensions (W x H x D)	10.5" x 6.4" x 1.1" (267 x 162 x 28mm)
Module Material	Plastic with 6 integrated mounting ears
Connections	Network Bridge: Cat 5 UTP Cable Door Accessories: Cat 5 Cable or Wired Leads Door Lock/DPS: Wired Leads
LED Indicators	Traffic Light, Door and Lock Status
Maximum Number of Door Modules in Locking Scheme	25 (Each Module handles maximum 4 doors)
Maximum Number of Doors Connected/Managed	Up to 100
Electric Locks	Fail Safe or Fail Secure (upon request)
Auxiliary Power Output	24VDC, 0.7 amps via 2-screw terminal block
Door Initial State	Normally Unlocked / Normally Locked
Low Voltage Relay Outputs	Four Configurable N.O. N.C.
Voltage Free Digital Inputs	Eight
Time Delay/Recovery Time	0 seconds up to 20 minutes
Cerification	(LVD) 2014/35/EU, (EMC) 2014/30/EU
Warranty	2-Year Limited Warranty



833.MOD.LOCK
sentryinterlocks.com